

DESIGN > ENGINEER > FABRICATE > CONSTRUCT > COMPLETE



LINCOLN CONTRACTING & EQUIPMENT CO., INC.

www.lincolncontracting.com

814.629.6641 / lincolninfo@lceci.com

SAFETY AND TRAINING



Lincoln Contracting & Equipment's principal concern is the health and safety of our employees. Employees are our number one asset and we believe that ongoing training, education, and awareness will help us to reach our goal of zero accidents. Our guiding fundamental beliefs and principles are:

- All exposures can be safeguarded
- All injuries can be prevented
- Employee involvement is essential
- Management is responsible for preventing injuries
- Prevention of injuries is good business
- Safety training is essential
- Working safely is a condition of employment

Lincoln Contracting and Equipment Company Inc. has a superior interstate modification rate (EMR) of less than 1.0. Lincoln Contracting also has an OSHA Total Recordable Incident Rate (TRIR) that is less than half of the industry average.

SAFETY AND TRAINING

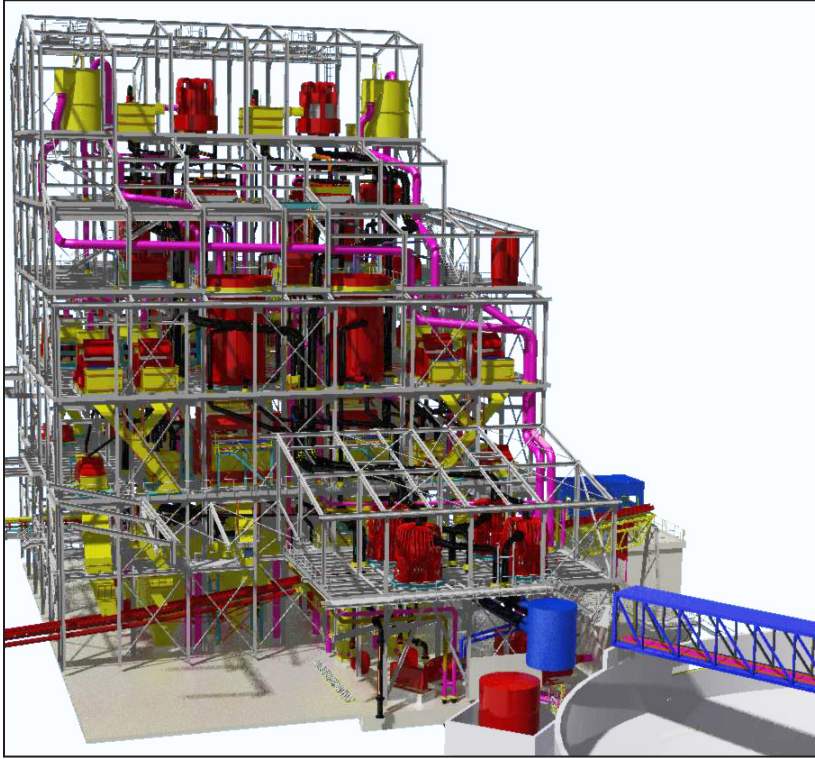
- Full Time Corporate Safety Director and Manager
- Continuous Supervisor & Mgmt Safety Training
- Trained responders in First Aid, CPR, and AED
- Comprehensive Safety and Health Program
- Corporate Drug and Alcohol Program and Policies
- MSHA and OSHA Trained Management and Employees
- On-Site Safety and Hazard Awareness Training
- Daily Safety Toolbox Talks
- Monthly Electrical Equipment Inspections
- Continuous Safety Training and Certification of Workforce
- Certified Crane Operators
- Members of ISNetwork, Veriforce, and Team Alert



We demonstrate our safety commitment by providing the Lincoln Contracting staff with ongoing classroom training, hands-on demonstrations, and the opportunity for continuous improvement. Lincoln Contracting managers are responsible for monitoring safety policies and making sure enforcement measures are in place.

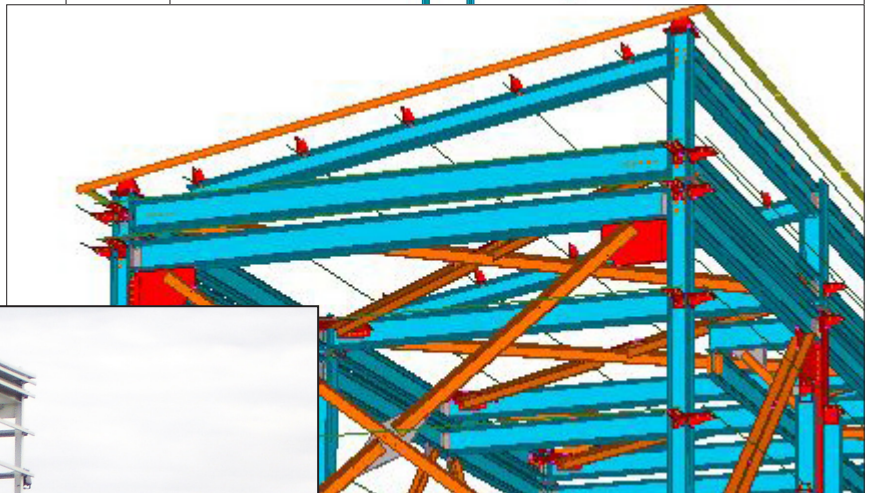
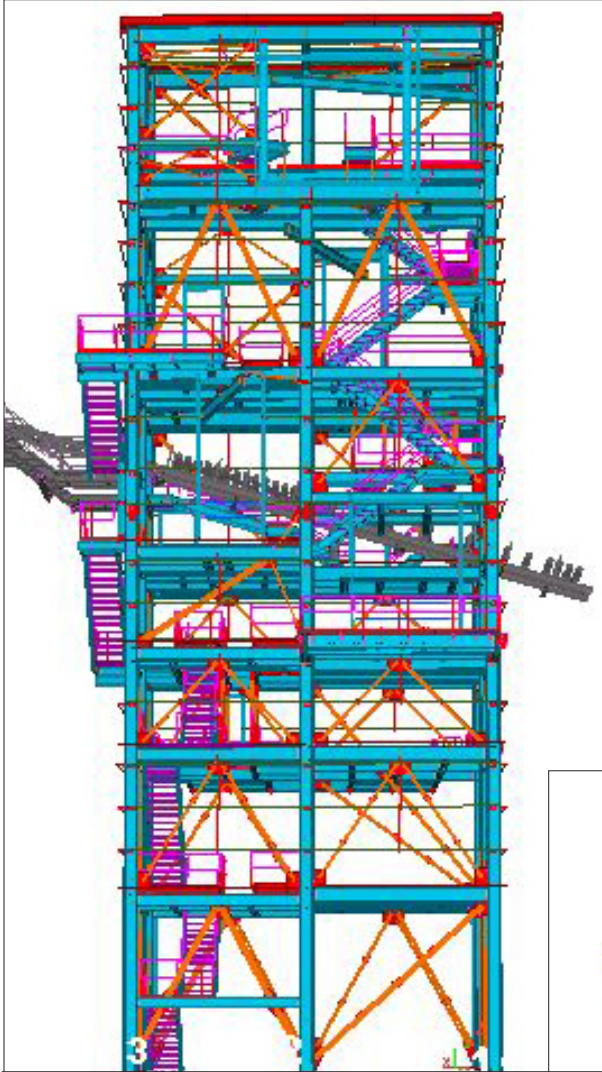
Safe working environments are a shared responsibility among employees, management, and subcontractors. All of us, through our commitment, engagement, and leadership must accept the challenge and make safety a core value of the company.

DESIGN AND ENGINEERING



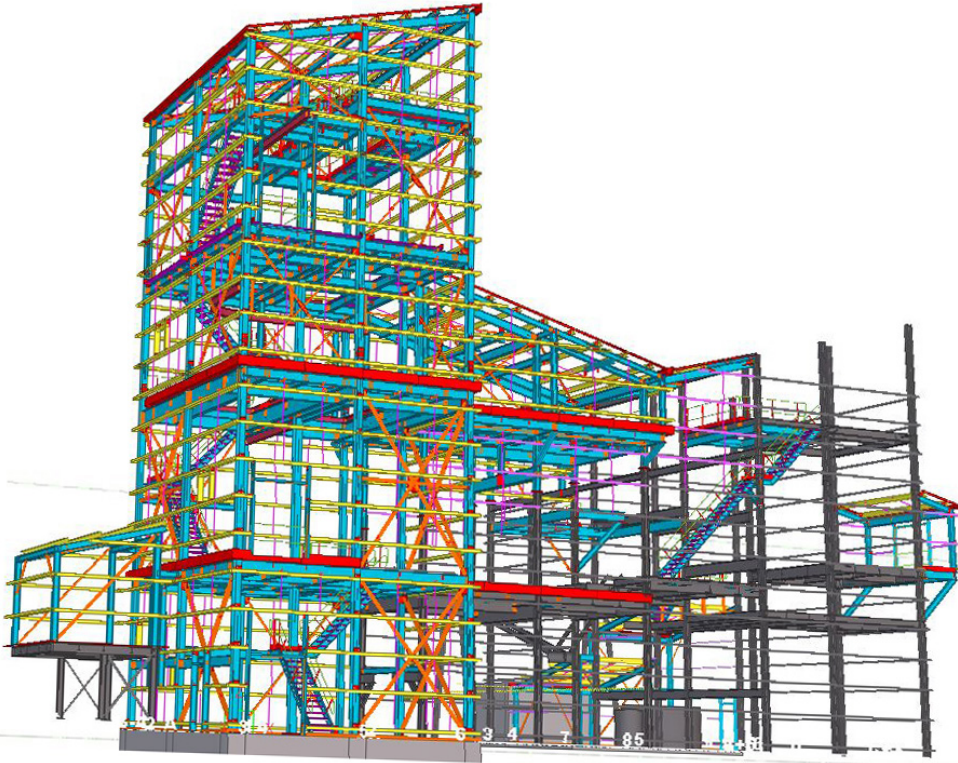
We are a hands-on contractor that can take a project from inception to completion, in-house, eliminating delays from subcontractors.

DESIGN AND ENGINEERING



At Lincoln Contracting, our design and engineering team uses state-of-art software and hardware to provide you with 3D modeling and drawings, detailed plans, and layouts.

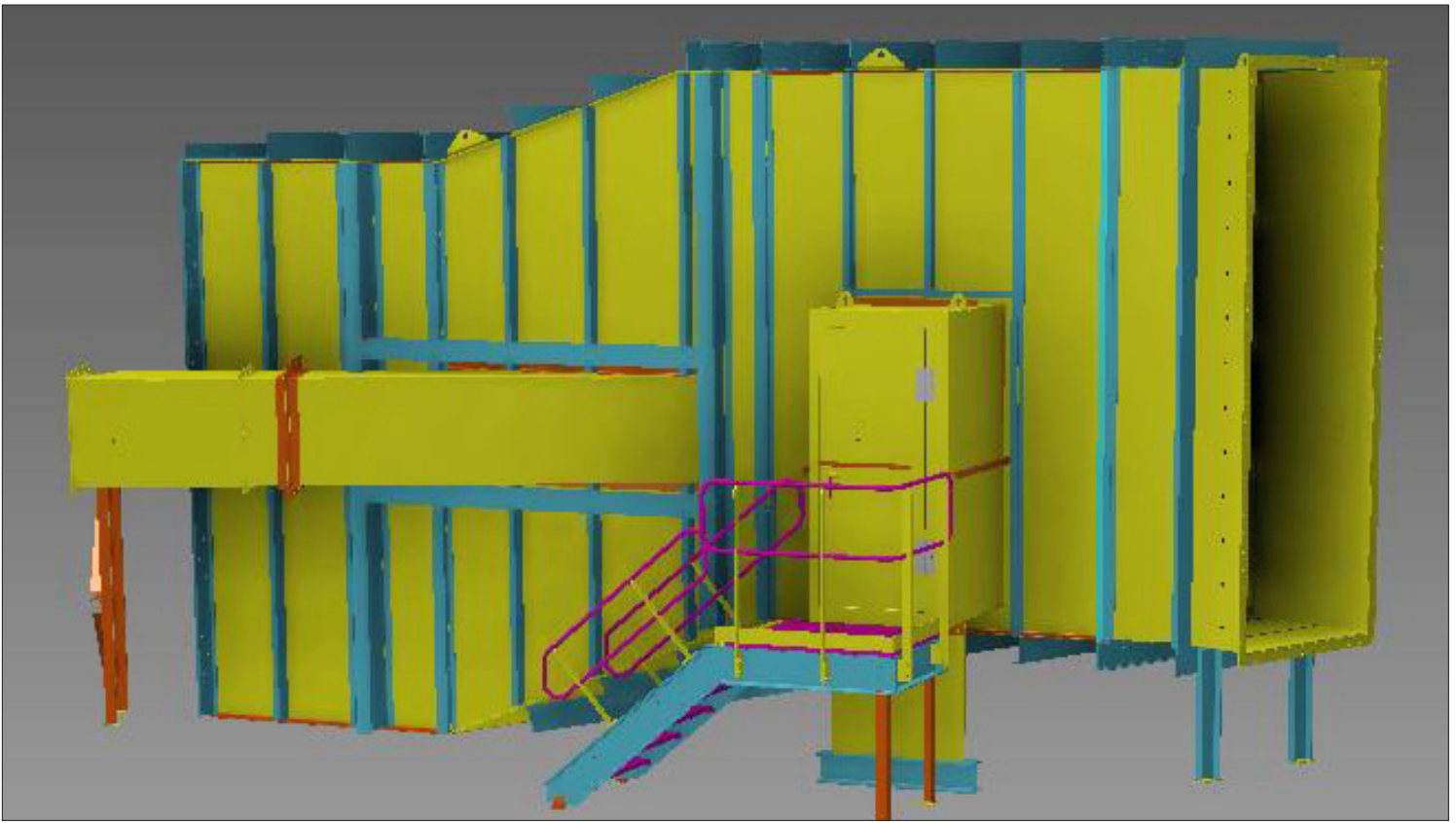
DESIGN AND ENGINEERING



- ASME Code Vessels
- Bulk Material Handling Systems
- Banana Screen Systems
- CAD Software Design Systems
 - AutoCad
 - Belt Analyst
 - Inventor
 - STAAD.Pro
 - Tekla Structures
- Centrifugal Fan System
- My Project
- Conveyor Systems
- Handrails & Walkways
- Manufacturing Plant Buildings
- Microsoft Project
- Nu Bert
- Professional Full Time - CWI Inspectors
- Professional Full Time - Engineers (PE)
- Professional Full Time - ICC Inspector
- Quote Software
- Stair Towers
- Structural Steel
- Structural Upgrades



DESIGN AND ENGINEERING



POWER AND PRECISION



The PythonX II, is a robotic CNC high definition plasma cutting system that has revolutionized structural steel fabrication. More than a machine, the PythonX is the new standard in our modern fabrication shop. This machine can perform beam drilling, coping, and piece marking. LCE has the capability of fabricating 1,000 tons of steel per month as an AISC certified fabricator, assuring you a quality product with on-time delivery.



POWER AND PRECISION



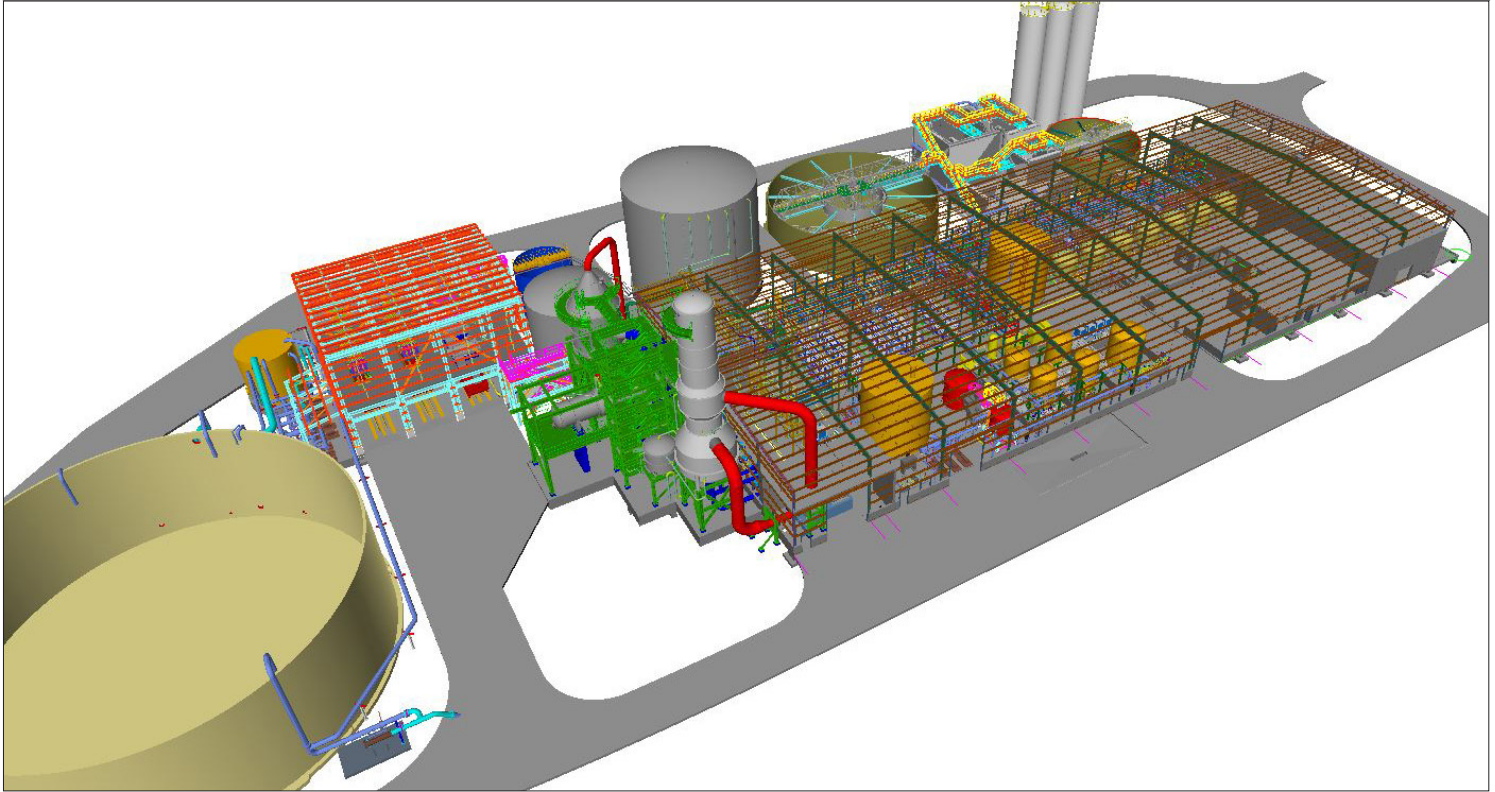
In addition to the Python, Lincoln Contracting also utilizes an Ocean Clipper, a CNC Angle Line, that can process clip angles and long bracing angles. The Clipper completely eliminates manual layout and manual drilling and punching. It produces perfectly accurate clip angles in the fastest possible time, eliminating huge amounts of expensive man hours and errors.

At Lincoln Contracting, we have the machines, the technology, and the people to get your next job done...LCE, a full-service contractor, can make it happen. Email us your project specs today!



You can rely on Lincoln Contracting, a full service AISC fabricator, to deliver your plant components on the dates you need them. Our state-of-the-art facilities are equipped with the most advanced technology and robotics and our highly skilled welders and machinists produce precision engineered components that are built to spec. So whether you need piping, conveying equipment, miscellaneous steel, platework, or structural steel, turn to Lincoln Contracting. We deliver on time, every time.

FABRICATION CAPABILITIES



ANGLE PROCESSING

Ocean Clipper

BAR ANGLE ROLL

3 1/2 x 3 1/2 up to 3/8"

Channel & Beams

Channel to 6"

Beams to 6"

BEAM DRILLING LINE

Programmable Ficep Victory II

FORMING

Variety of Press brakes & dies

Capacity 14' between housing

300-Ton Press – max

Forming up to 1/2"

Mechanical Punch Press

Multiple Iron Punches

100-Ton Punch-max

1005 Geka Ironworker

Programmable CNC Control

Press Brake - max 320 ton

PLATE ROLLS

3/16 x 6'

1/2 x 8'

1/2 x 10'

PLASMA OXY/FUEL CUTTING SYSTEM

Cutting / Burn Table

Phantom Controller

PLASMA BEAM LINE

Python X2

SANDBLASTING

Pangborn Rotary Blaster

Brister Blaster

Water Blaster - 40,000 PSI

Booth w/ Bag-House

10' W x 20' L x 10' H

10' W x 30' L x 10' H

14' W x 45' L x 14' H

SAW CUTTING

Multiple Band Saws

Vertical, Horizontal, Indexing

Programming

21"x 25" Capacity

SHEARING

Multiple shears

3/8 x 12' on A36 Steel

1/2 x 10" on A36 Steel

1/2 x 20' on A36 Steel

3/4 x 12' on A36 Steel



FABRICATION CAPABILITIES



TUBE BENDING

Jancey ER60A – 2" Capacity
Jancey Coper – 2 ½" Capacity

WELDING

MIG, TIG Submerge ARC
ASME PP, R, S, U

COATING PREPARATION

Various Chippers, Grinders, Sanders,
Scalers
Clemco Single Chamber Blast
System
Blast Booth w/ Hopper Recovery
System
Line-X Portable Unit
XS – 350
SE – 210

FINISHING

Graco Spray Equipment
Graco Xtreme 35 Sprayers
Graco Switch Tip Rac Guns
Graco Conventional Pressure Cups
Spray Application Area
25' W x 65' L x 45' H
30' W x 65' L x 20' H
50' W x 100' L x 30' H

Coatings
Zinc-base, tars, alkyd, enamels, ep-
oxy, urethanes
Paint Recording QAQC Systems
AISC Certified

MATERIAL HANDLING

Multiple Overhead Cranes & Hoists
Multiple Fork Trucks
Boom Trucks
Flatbed – Straight Truck
Tractor Trailers w/ Step Decks &
Lowboys

SECONDARY SERVICES

AISC Certified Erector
ASME – QAQC Program
Live video conferencing available on
site
Sand, grit / or shot blasting
X-ray testing, spot or continuous,
available in our plant

Design & Engineering Capabilities

Civil / Coal & Mineral Processing /

Electrical, Control & Process Systems / Module

Construction / Plant Evaluation Recommendations /

Process Flow Sheets



FABRICATION

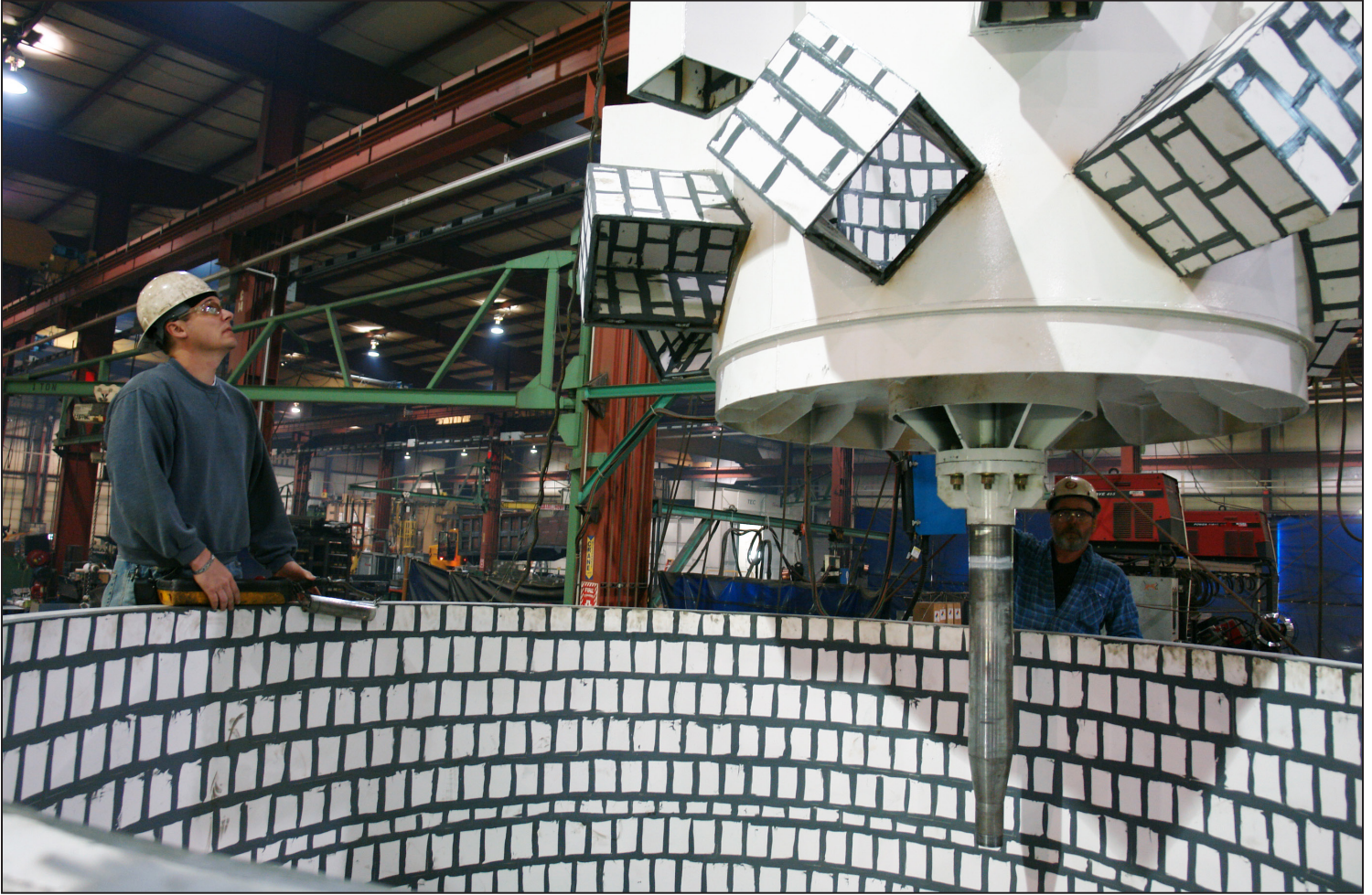


Lincoln Contracting has 3 fabrication shops in Pennsylvania and Maryland where we are fully equipped to provide precision engineered, custom fabrication services.

- Bins
- Ceramic Linings
- Certified AISC Fabricator
- Chutes
- Conveying Equipment
- Ductwork
- Hoppers
- Material Handling Systems
- Miscellaneous Steel
- Piping
- Platework
- Structural Steel



FABRICATION



Specialty wear resistant liners:

- Ceramic
- Tivar
- Stainless Steel
- Duracorr
- UHMW
- Stonhard
- AR Plate
- TriBraz

GENERAL CONTRACTING

CONCRETE

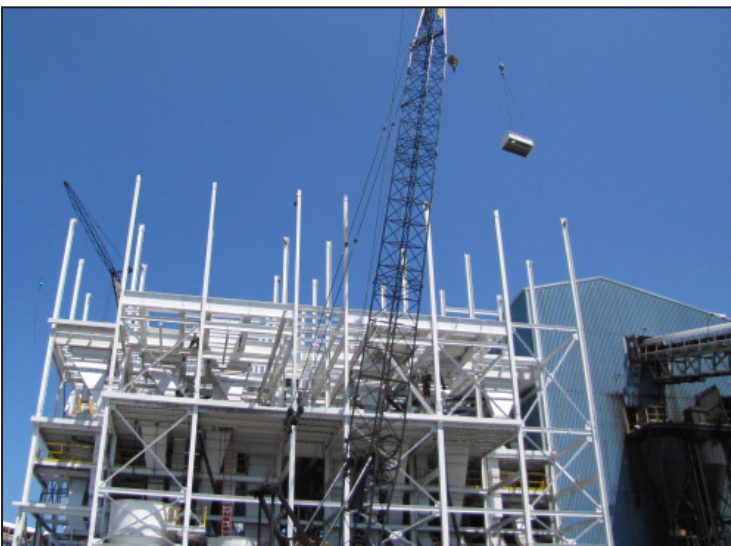


Lincoln Contracting is a full-service contracting company that provides all the material, labor, equipment, vehicles, and services necessary for the construction of your entire project. In addition, we can:

- Apply for building permits
- Provide temporary utilities on site
- Manage personnel on site
- Deliver site surveying and engineering
- Monitor schedules
- Maintain accurate records

GENERAL CONTRACTING

STEEL ERECTION



Rely on us for exceptional customer service, quality workmanship, and on-time delivery. The Lincoln Contracting staff works closely with our customers, listening to individual needs and delivering quality products. No job is too small and no job is too big. Call us today.

Our highly skilled field personnel can complete your turnkey project. Their classifications include:

Construction Management
Supervision

Carpenters
Laborers

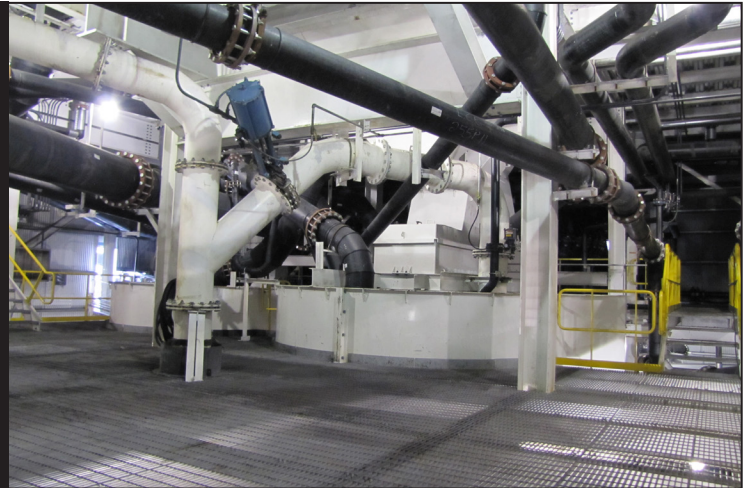
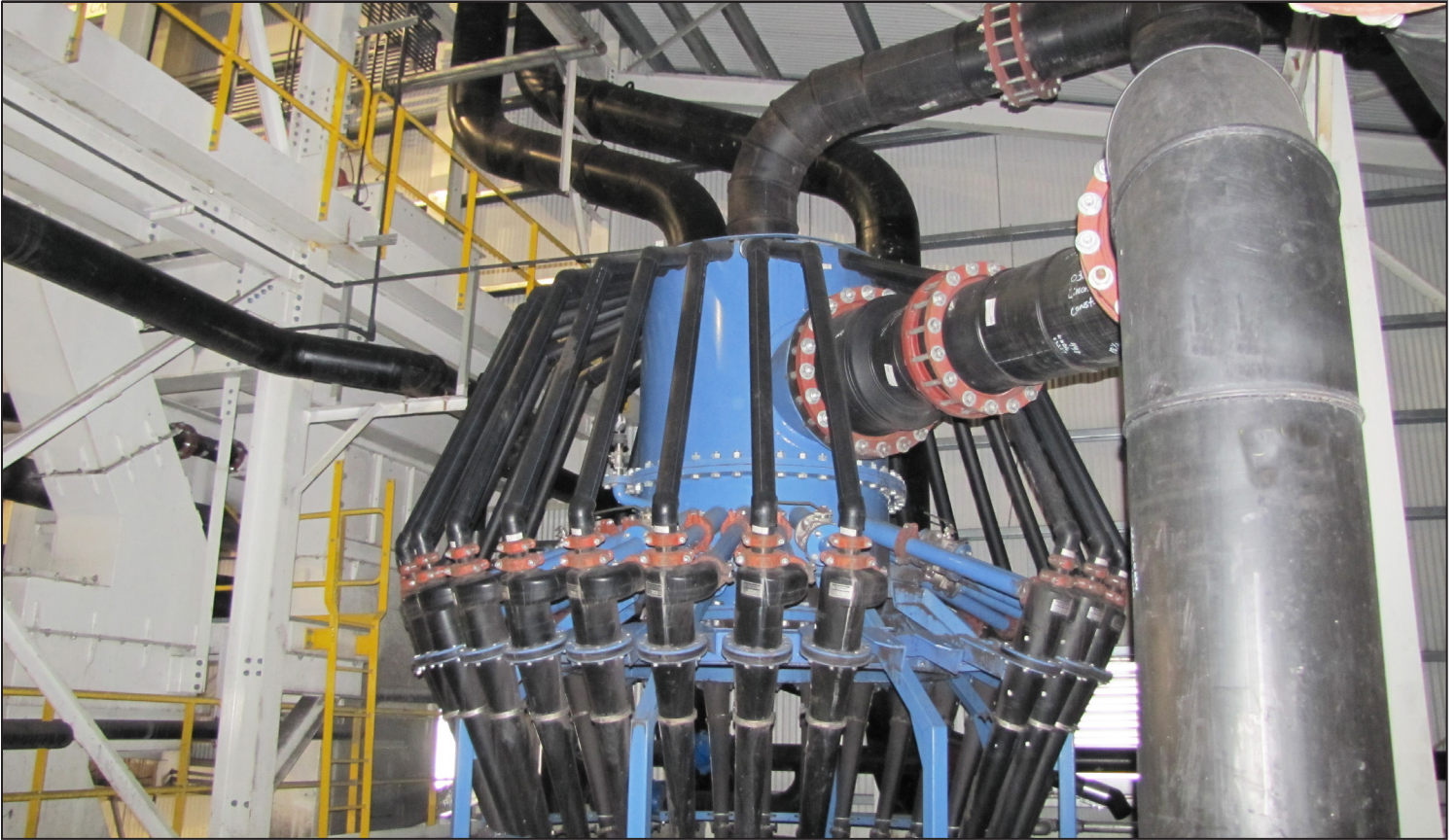
Ironworkers
Millwrights

Cement Finishers
Certified Welders

Certified Electricians
Equipment Operators

GENERAL CONTRACTING

PIPING



GENERAL CONTRACTING

ELECTRICAL



- Air Distribution & Environmental Systems
- Automated Sampling Systems
- Barge Loading
- Bulk Material Handling Equipment
- Concrete Forming/Placement
- Process Piping
- Electrical Process & Control Systems
- Plant Automation
- Structural Steel Fabrication & Erection
- Total Turnkey Construction
- Unit Truck & Train Loadouts

GENERAL CONTRACTING

**MATERIAL
HANDLING**



Call today and let us put our 40+ years of contracting and building experience to work for you.



Depend on our experience, knowledge, and professional service to get your project completed on time and on budget.

MISCELLANEOUS STEEL



All work is visually inspected by Certified Welding Inspectors and recorded as per AISC and AWS codes. Our paint facilities are complete with Wheelabrator and shot blast rooms. Surface preparation of steel and painting are checked by the Lincoln Contracting quality control team and surface profile and paint millage is recorded. Rely on Lincoln Contracting to provide you with exceptional quality and customer service.

QUALITY ASSURANCE



The quality assurance team at Lincoln Contracting is led by qualified and experienced personnel who are serious about delivering quality products that are manufactured to the highest of standards.

- AISC Certified Fabricator
- ASME Certified – PP, R, S, U
- Certified Welding Inspectors
- Professional Engineers
- ICC Certified Inspector
- Safety Director – Full Time
- QA/QC Programs
- Quality Control Systems
- UA Certified Fabricator



DIVERSITY OF SERVICES

SKILLED FIELD PERSONNEL

Carpenters
Concrete Finishers
Certified Electricians
Certified Welders
Construction Management
Equipment Operators
Field Superintendents
Ironworkers
Laborers
Millwrights
Safety Personnel and Pipefitters

TRADE ASSOCIATIONS

ABC	Association of Bituminous Contractors
AISC	American Institute of Steel Fabrication
AWS	American Welding Society
FORCE	Families Organized to Represent the Coal Economy
PCA	Pennsylvania Coal Alliance
PMA	Pennsylvania Manufacturing Association
SPC	Society for Protective Coatings
PACA	Pennsylvania Aggregates & Concrete Association

ENGINEERING & DESIGN

Software Systems
AutoCAD
Belt Analyst
Inventor
STAAD.PRO
RISACONNECTION
RISA-3D
Tekla Structures

Professional Full Time Engineers
Civil Engineering
Mechanical Engineering
Structural Engineering

Detailing
3D Modeling
Process Flow Sheets
CNC Programming

ENGINEERING, FABRICATION, AND INSTALLATION SERVICES:

- Aggregate Facilities
- Automated Sampling Systems
- Barge Loading & Unloading Facilities
- Bleeder Fan Equipment & Systems
- Coal Preparation Plants
- Concrete Forming & Placement
- Conveyor Systems
- Design Hyphenate Projects
- Electrical Work Including Process & Control Systems
- General Contracting
- Heavy Rigging
- Manufacturing Plant Buildings
- Material Handling
- Mine Ventilation Fans, Equipment & Systems
- Module Construction
- Plant Automation
- Plant Evaluations & Recommendations
- Plant Upgrades
- Pre-Engineered Buildings
- Process Piping
- Project Feasibility Studies
- Stair Towers
- Structural Steel Fabrication & Erection
- Structural Upgrades
- Turnkey Construction
- Unit Truck & Train Loadouts
- Water Treatment Plants

QUALITY ASSURANCE

- AISC Certified Fabricator
- Certified Welding Inspectors
- Professional Engineers
- QA/QC Programs
- Quality Control Systems

SAFETY AND TRAINING

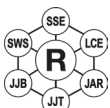
- CPR Certification and Training
- Continuous Supervisor & Management Training
- Continuous Educational Certified Training
- Corporate Alcohol & Drug Policy
- Daily Safety Employee Tool Box Talks
- Disciplinary Procedures & Processes
- Emergency Evacuation
- Full Time Safety Director & Manager
- Indoctrination Policies & Procedures
- MSHA Certified & Annual Training
- Onsite Safety Training
- OSHA Certification & Training (10 & 30 Hrs.)
- Safety Director - Full Time
- Safety Inventory Tool Inspection
- ISNetworld, IADC, Veriforce



814-629-6641 / lincolninfo@lceci.com
www.lincolncontracting.com

2478 Lincoln Highway, Stoystown, PA 15563

Contracting is our business and we build on experience.



Lincoln Contracting is a subsidiary
of Riggs Industries, Inc.



THE RIGGS COMPANIES



Riggs Industries, Inc. is one of the largest and diverse family-owned businesses in Somerset County, Pa. The company employs close to 600 people in a variety of industries...mining equipment, general contracting and construction, automated sampling systems, dump truck and trailer manufacturing, custom welding and fabrication, and specialty transportation equipment. The company's corporate offices are located in Stoystown, Pa. That location also houses two of Riggs' subsidiaries, Somerset Steel Erection and Lincoln Contracting & Equipment. The other subsidiaries are located in Somerset, Pa.



SOMERSET STEEL ERECTION COMPANY, INC.

800.229.5205
www.somersetsteel.com

Somerset Steel Erection, the oldest division of Riggs Industries, was established in 1957. The company is a full-service industrial and commercial contractor, specializing in general contracting, concrete work, piping, metal and steel fabrication, and steel erection.



LINCOLN CONTRACTING & EQUIPMENT COMPANY, INC.

814.629.6641
www.lincolncontracting.com

Lincoln Contracting & Equipment was established in 1974. The company is a full-service, hands-on contractor specializing in plant design and layout, engineering, electrical, piping, metal and steel fabrication, complete turnkey construction of preparation plants, and bulk material handling systems.



James A. Redding Company

Automated Sampling Specialists

814.444.7200 • www.jamesaredding.com

The James A. Redding Company was purchased by Lincoln Contracting & Equipment in 2001. The company is the pioneer in the design, production, and supply of sampling systems and components. Their two-stage, three-stage, nine-iron, and portable and auger sampling systems are installed around the world.



814.444.3400 • www.somersetwelding.com

Somerset Welding & Steel Industrial Fabrication is a full-service welding, hydraulics, and fabrication facility. The engineering staff uses state-of-the-art software technology and the expert workforce uses the latest robotics, computers, and tooling to manufacture custom products for customers. The company also provides 3D modeling and detailed proposal drawings.



800.777.2671 • www.somersetwelding.com

Somerset Welding & Steel Government and Defense is a full-service welding, hydraulics, and fabrication facility. The company manufactures primary components for tactical wheeled, tracked, and un-manned ground vehicles. The company also develops prototypes and performs vehicle modifications and repairs in theater.



800.777.2671 • www.jjbodies.com

J&J Truck Bodies & Trailers manufactures steel and aluminum dump truck bodies and trailers designed for construction, mining, road maintenance, and municipal applications. The company also manufactures tippers, live floors, push outs and custom transportation solutions for use in waste hauling and oil and gas drilling applications.



877.455.8785 • www.jjtruckequipment.com

J&J Truck Equipment supplies specialty truck equipment such as crane service truck bodies, stake bodies, flat beds, snow removal de-icing equipment, and lubrication and field bodies that are primarily used by contractors, construction companies, and government agencies.

Somerset Welding & Steel is an ISO 9001:2008 certified company.

CONTACT INFORMATION



Contracting is our business and we build on experience.



Boswell Office (Headquarters):

P.O. Box 96
Boswell, PA 15531 USA
814.629.6641 / Fax: 814.629.6588

Somerset Office:

733 S. Center Avenue
Somerset, PA 15501 USA
814.444.7200 / Fax: 814.445.1320

Cumberland Office:

115 Elizabeth Street
Cumberland, MD 21502 USA
301.722.3980 / Fax: 301.722.3985

Email: lincolninfo@lceci.com / www.lincolncontracting.com

We hope you will join our growing list of clients who rely on us for quality products and professional service. Just a partial list of these customers include:

A.B.B. Alstom Power
Alabama Power
Alpha Natural Resources
Appvion
Bechtel Corporation
Consol Energy
Cumberland Coal Resources
Dearborn Mid-West
Duke/Fluor Daniel
Edison Mission Energy
H.F. Teichmann
Harsco
I.C.F. International

Jacobs-Sirrine Corporation
Kennebec Energy
Mannesman Demag, Inc.
Murray Energy
North American Hoganas
Perry County Coal
Emerald Coal Resources
River Hill Coal
Rocky Mountain Steel
South Carolina Electric & Gas
TEK (America), Inc.
U.S. Generating Company
Westvaco Corporation



**LINCOLN CONTRACTING &
EQUIPMENT CO., INC.**

**814.629.6641 / lincolninfo@lceci.com
www.lincolncontracting.com**